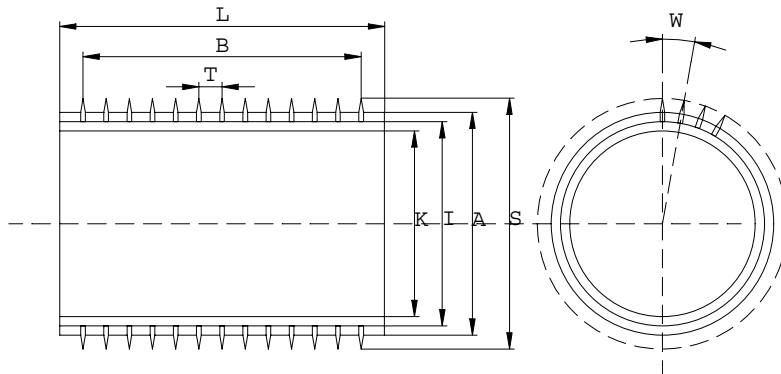


# Questionnaire Spiked Rollers

Type of machine		Year	
Manufacturer			
Application			



L: Roller length		mm
B: Pinning width		mm
I: Ring inner diameter		mm
A: Ring outer diameter		mm
S: Diameter over the pins		mm
K: Core diameter		mm

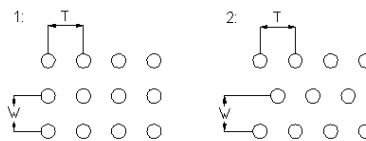
Ring material		Standard:	
		Special design:	
Core material			

## Pinning:

D: Pin diameter		mm
T: Pin spacing		mm
N: Pin length		mm
F: Pin protruding length		mm
W: Angle between pin rows		degree
U: pin angle (vertical = 0°)		degree
R: No. of pin rows (circumference)		
P: Number of pins per row		

Offset between pin rows  Number of individual rows

1 = no offset, i.e. rows behind each other  
 2 = staggered  
 More than 2: spiral form



Specialities:  
 e. g. pins not required, high temperature range, contact with food

Inquiry from	
Contact person	
Telephone	
Telefax	
Street	
Zip code/location	

To: **tambula**  
 Textilmaschinenteile GmbH  
 Robert-Bunsen-Straße 15  
 36179 Bebra  
 Postfach 12 48  
 36172 Bebra

Tel: 0049-6622-919035  
 Fax: 0049-6622-7480  
 E-Mail: sales@tambula.de